

GMC CHEVROLET  
**SAVANA / EXPRESS**

2026



# UPFIT GUIDE

**RANGER**<sup>™</sup>  
DESIGN

A Clarience Technologies Company

# HELPING MOBILE TECHNICIANS WORK MORE EFFECTIVELY BY PROVIDING ORGANIZED STORAGE SOLUTIONS

**AT RANGER DESIGN,  
WE BELIEVE MORE IS POSSIBLE.**

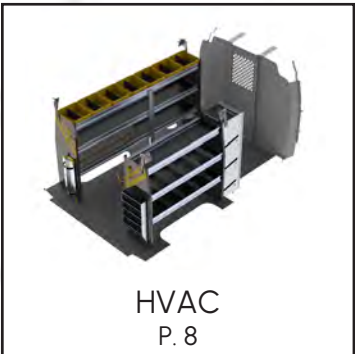
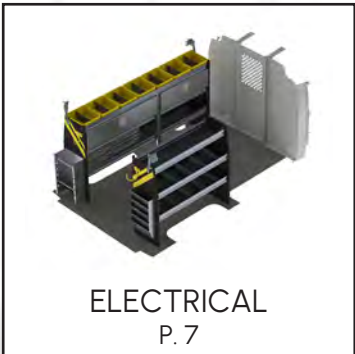
We believe work vehicles and the technicians that drive them can become more organized, more efficient, more productive and more profitable. At Ranger Design we're committed to bringing you the products and services that make that possible.

More means helping you choose the right work van for your application, as well as giving you engineering support and expert advice to help design the most efficient work space in your new vehicle.

More also means getting that new van outfitted and on the road faster, so you can start using it for the reason you bought it.

We're committed to bringing you more, because we believe more is possible.

# HOW TO BUY



## Large Distributor Network Across the Continent

**Buy** Ranger Design Quickship service is available through your local distributor. [rangerdesign.com/find-distributor](http://rangerdesign.com/find-distributor)

**Lead Time** Quickship orders placed before 1PM EST, will ship from our factory within 48 hours.

# HOW TO USE THE LAYOUT GUIDE

**INSIDE ROOF HEIGHT**

To determine the maximum shelf height that can be used in the van.

**PARTITION DEPTH**

This indicates the space taken up by our partition for this vehicle. Please note that this measurement is determined by the partition that encroaches the most. Some partitions may take up less space. Take note that this measurement may not necessarily be on the floor.

**DOOR OPENING**

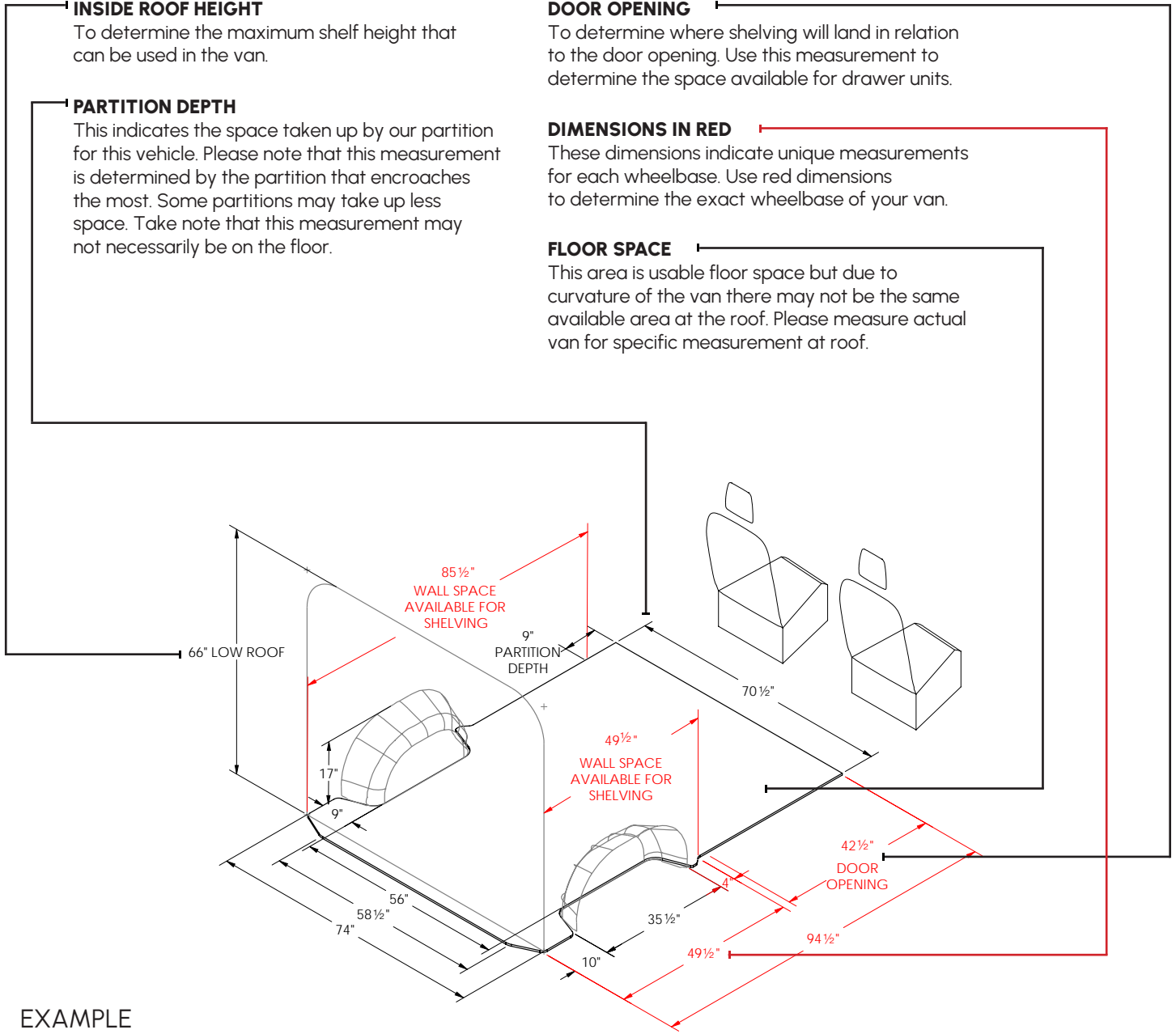
To determine where shelving will land in relation to the door opening. Use this measurement to determine the space available for drawer units.

**DIMENSIONS IN RED**

These dimensions indicate unique measurements for each wheelbase. Use red dimensions to determine the exact wheelbase of your van.

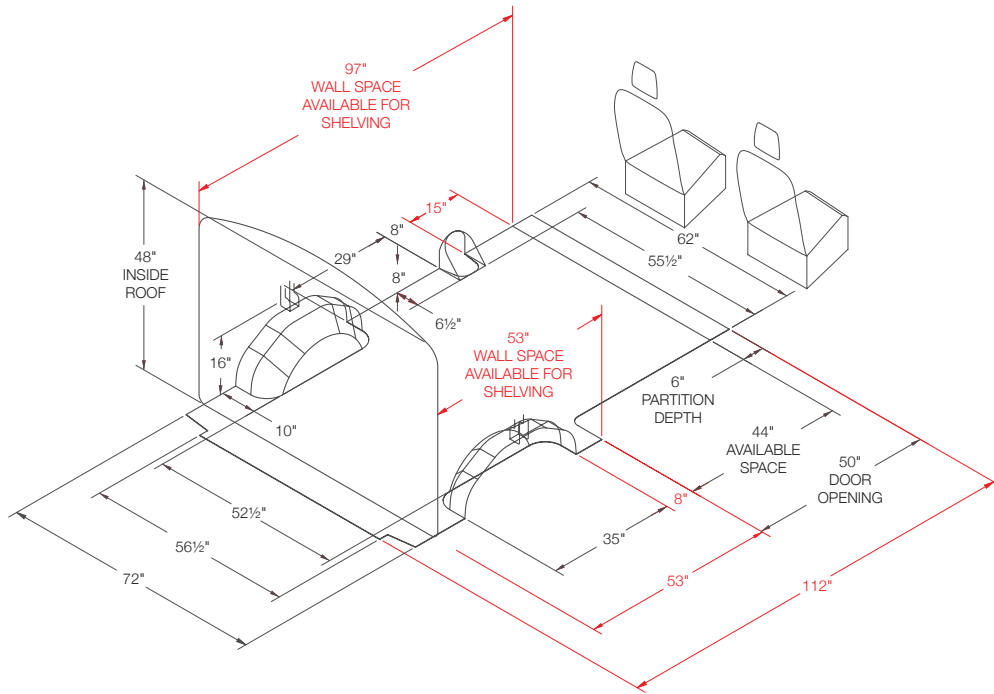
**FLOOR SPACE**

This area is usable floor space but due to curvature of the van there may not be the same available area at the roof. Please measure actual van for specific measurement at roof.

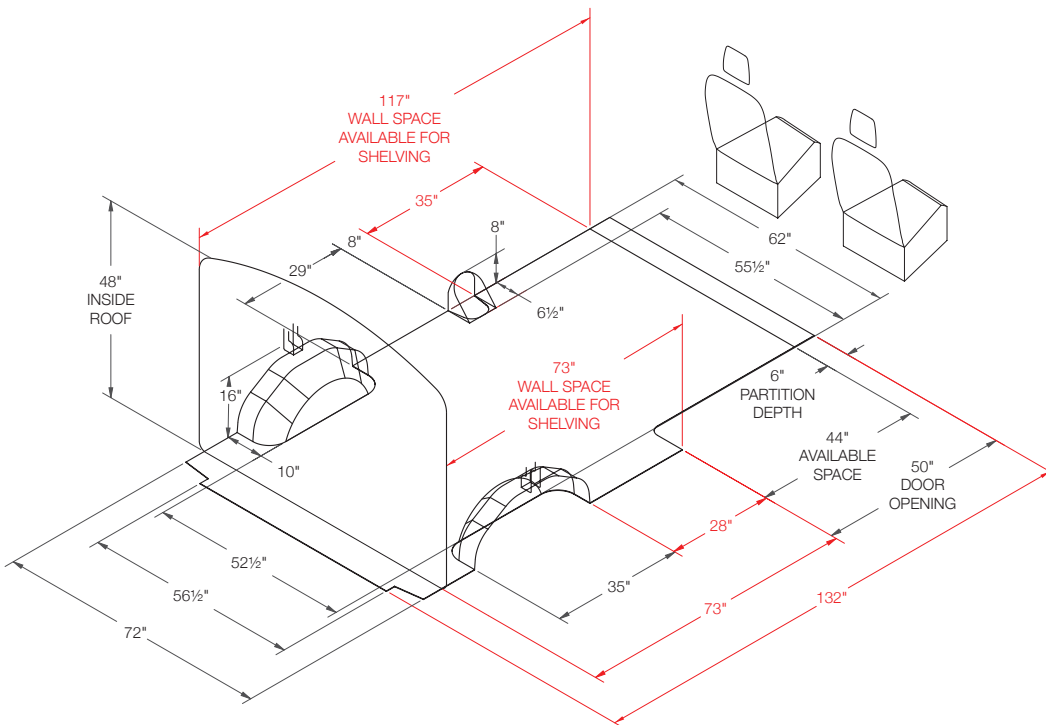


EXAMPLE LAYOUT GUIDE

# GETTING STARTED



GMC SAVANA  
CHEVROLET EXPRESS  
Regular 135" Wheelbase

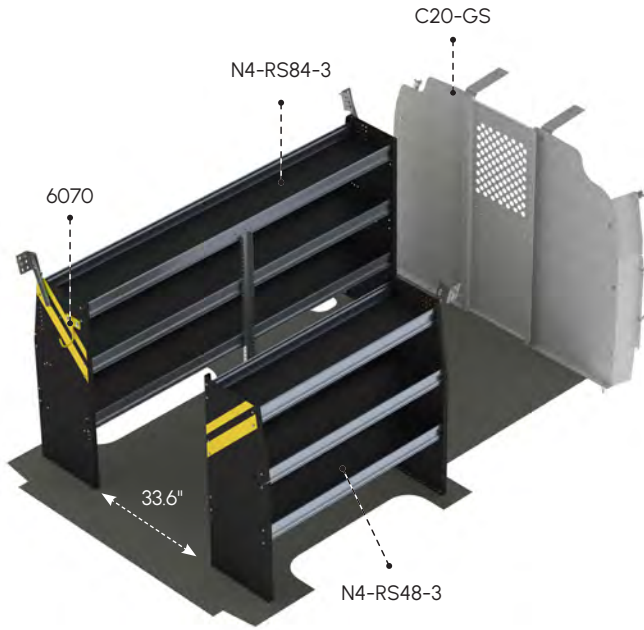


GMC SAVANA  
CHEVROLET EXPRESS  
Extended 155" Wheelbase



# CONTRACTOR PACKAGE

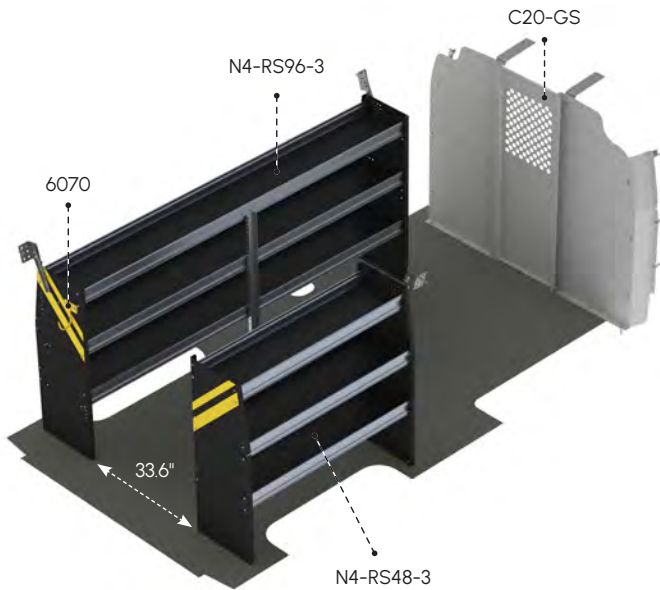
CONTRACTOR



## GSR-10 CONTRACTOR

<b>MATERIAL</b>	Steel	<b>WHEELBASE</b>	135"
<b>WEIGHT</b>	203 lbs	<b>ROOF HEIGHT</b>	Standard
<b>INSTALL TIME</b>	3.8 hrs	<b>QUICKSHIP</b>	Yes

QTY	PART	DESCRIPTION
1	6070	6" Hook, 3" opening, painted
1	C20-GS	Straight steel partition with perforated window, no access
1	N4-RS48-3	Steel shelving unit, 14" D x 48" W x 44.5" H
1	N4-RS84-3	Steel shelving unit, 14" D x 84" W x 44.5" H



## GSL-10 CONTRACTOR

<b>MATERIAL</b>	Steel	<b>WHEELBASE</b>	155"
<b>WEIGHT</b>	211 lbs	<b>ROOF HEIGHT</b>	Standard
<b>INSTALL TIME</b>	3.8 hrs	<b>QUICKSHIP</b>	Yes

QTY	PART	DESCRIPTION
1	6070	6" Hook, 3" opening, painted
1	C20-GS	Straight steel partition, perforated window, no access
1	N4-RS48-3	Steel shelving unit, 14" D x 48" W x 44.5" H
1	N4-RS96-3	Steel shelving unit, 14" D x 96" W x 44.5" H

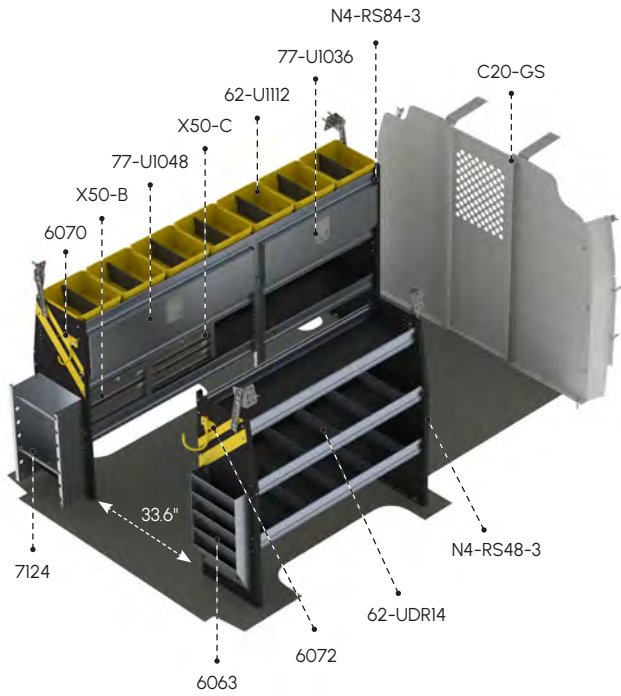
VISIT  
RANGERDESIGN.COM  
TO VIEW OUR  
SAFETY PARTITIONS:



# ELECTRICAL PACKAGE

## GSR-11

### ELECTRICAL

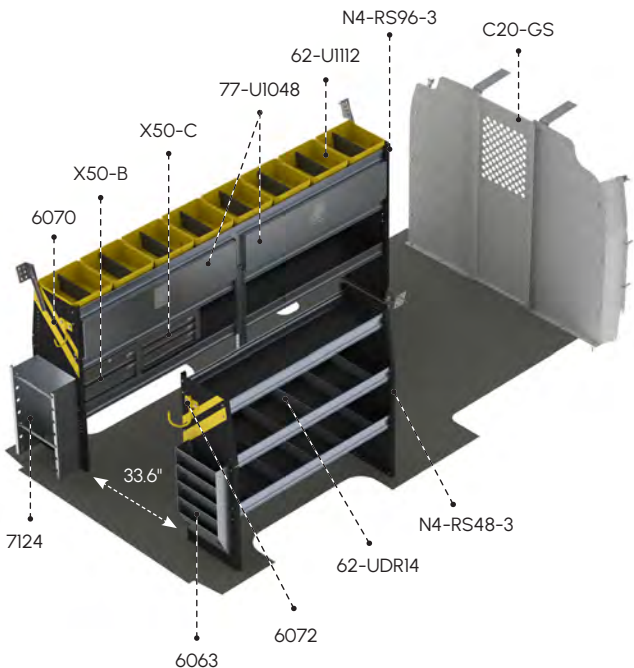


<b>MATERIAL</b>	Steel	<b>WHEELBASE</b>	135"
<b>WEIGHT</b>	311 lbs	<b>ROOF HEIGHT</b>	Standard
<b>INSTALL TIME</b>	6.3 hrs	<b>QUICKSHIP</b>	Yes

QTY	PART	DESCRIPTION
1	6063	Paper holder, extra deep, 5 slots
1	6070	6" Hook, 3" opening, painted
1	6072	8" Swivel hook, 4" opening, painted
1	7124	Reel holder with two 5/8" diameter rods
7	62-U1112	12" deep plastic bin
2	62-UDR14	Set of 5 dividers for a 14" Shelf
1	77-U1036	Adjustable shelving door unit - 33" W - for 36" & 72" shelves
1	77-U1048	Adjustable shelving door unit - 45" W - for 48" & 96" shelves
1	C20-GS	Straight steel partition with perforated window, no access
1	N4-RS48-3	Steel shelving unit, 14" D x 48" W x 44.5" H
1	N4-RS84-3	Steel shelving unit, 14" D x 84" W x 44.5" H
1	X50-B	Compact 2-drawer unit
1	X50-C	Compact 3-drawer unit

## GSL-11

### ELECTRICAL

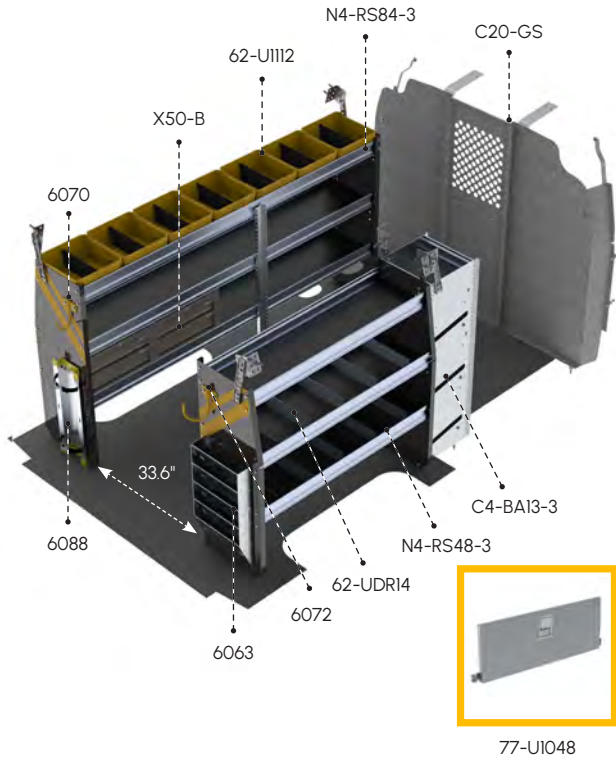


<b>MATERIAL</b>	Steel	<b>WHEELBASE</b>	155"
<b>WEIGHT</b>	322 lbs	<b>ROOF HEIGHT</b>	Standard
<b>INSTALL TIME</b>	6.3 hrs	<b>QUICKSHIP</b>	Yes

QTY	PART	DESCRIPTION
1	6063	Paper holder, extra deep, 5 slots
1	6070	6" Hook, 3" opening, painted
1	6072	8" Swivel hook, 4" opening, painted
1	7124	Reel holder with two 5/8" diameter rods
8	62-U1112	12" deep plastic bin
2	62-UDR14	Set of 5 dividers for a 14" Shelf
2	77-U1048	Adjustable shelving door unit - 45" W - for 48" & 96" shelves
1	C20-GS	Straight steel partition with perforated window, no access
1	N4-RS48-3	Steel shelving unit, 14" D x 48" W x 44.5" H
1	N4-RS96-3	Steel shelving unit, 14" D x 96" W x 44.5" H
1	X50-B	Compact 2-drawer unit
1	X50-C	Compact 3-drawer unit

# HVAC PACKAGE

HVAC



## GSR-12 HVAC

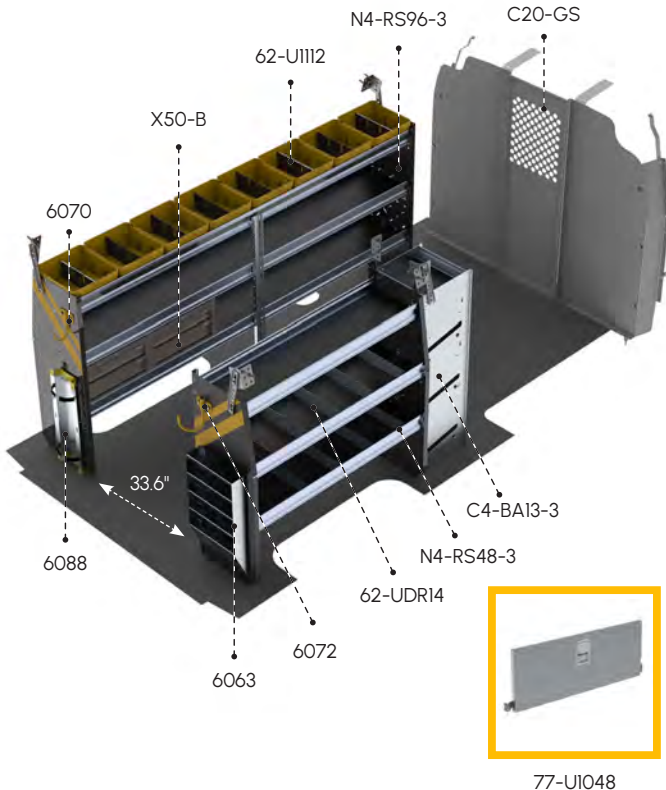
<b>MATERIAL</b>	Steel	<b>WHEELBASE</b>	135"
<b>WEIGHT</b>	298 lbs	<b>ROOF HEIGHT</b>	Standard
<b>INSTALL TIME</b>	6.1 hrs	<b>QUICKSHIP</b>	Yes

QTY	PART	DESCRIPTION
1	C4-BA13-3	3-Tier refrigerant rack for large bottles
1	6063	Paper holder, extra deep, 5 slots
1	6070	6" Hook, 3" opening, painted
1	6072	8" Swivel hook, 4" opening, painted
1	6088	Large aluminum bottle holder, with two black nylon straps
7	62-U1112	12" deep plastic bin
2	62-UDR14	Set of 5 dividers for a 14" Shelf
1	77-U1048	Adjustable shelving door unit - 45" W - for 48" & 96" shelves
1	C20-GS	Straight steel partition with perforated window, no access
1	N4-RS48-3	Steel shelving unit, 14" D x 48" W x 44.5" H
1	N4-RS84-3	Steel shelving unit, 14" D x 84" W x 44.5" H
2	X50-B	Compact 2-drawer unit

77-U1048

## GSL-12 HVAC

<b>MATERIAL</b>	Steel	<b>WHEELBASE</b>	155"
<b>WEIGHT</b>	307 lbs	<b>ROOF HEIGHT</b>	Standard
<b>INSTALL TIME</b>	6.1 hrs	<b>QUICKSHIP</b>	Yes



77-U1048

QTY	PART	DESCRIPTION
1	C4-BA13-3	3-Tier refrigerant rack for large bottles
1	6063	Paper holder, extra deep, 5 slots
1	6070	6" Hook, 3" opening, painted
1	6072	8" Swivel hook, 4" opening, painted
1	6088	Large aluminum bottle holder, with two black nylon straps
8	62-U1112	12" deep plastic bin
2	62-UDR14	Set of 5 dividers for a 14" Shelf
1	77-U1048	Adjustable shelving door unit - 45" W - for 48" & 96" shelves
1	C20-GS	Straight steel partition with perforated window, no access
1	N4-RS48-3	Steel shelving unit, 14" D x 48" W x 44.5" H
1	N4-RS96-3	Steel shelving unit, 14" D x 96" W x 44.5" H
2	X50-B	Compact 2-drawer unit

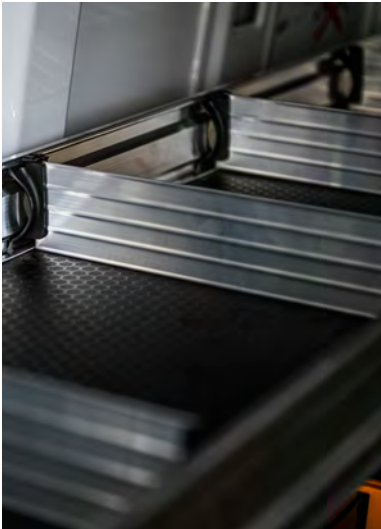
# HVAC PACKAGE



HVAC



**6072**  
8" Swivel hook, 3" opening

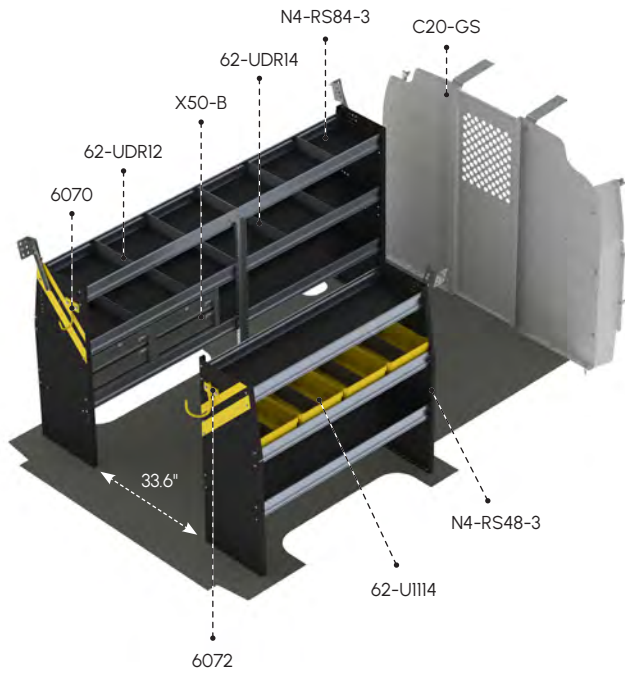


**62-UDR14**  
Set of 5 dividers for a 14" shelf



**77-U1048**  
Adjustable shelving door units

# SERVICE PACKAGE

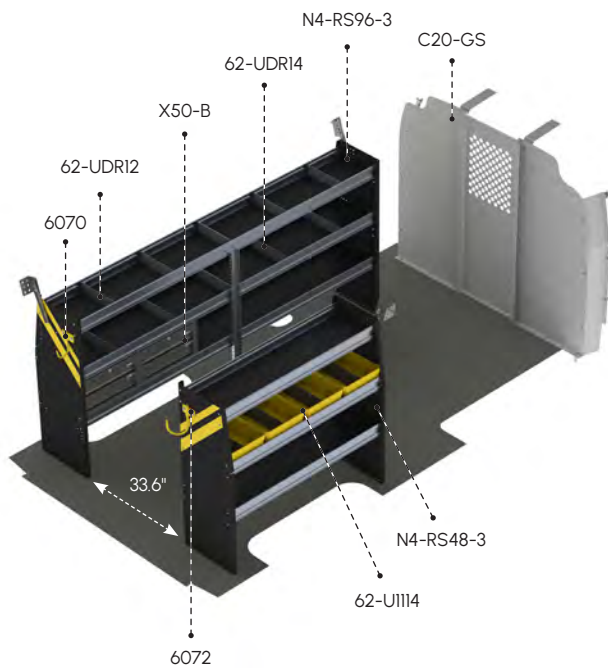


## GSR-16 SERVICE

<b>MATERIAL</b>	Steel	<b>WHEELBASE</b>	135"
<b>WEIGHT</b>	270 lbs	<b>ROOF HEIGHT</b>	Standard
<b>INSTALL TIME</b>	4.6 hrs	<b>QUICKSHIP</b>	Yes

QTY	PART	DESCRIPTION
1	6070	6" Hook, 3" opening, painted
1	6072	8" Swivel hook, 4" opening, painted
4	62-U1114	14" deep plastic bin
1	62-UDR12	Set of 5 dividers for a 12" Shelf
1	62-UDR14	Set of 5 dividers for a 14" Shelf
1	C20-GS	Straight steel partition with perforated window, no access
1	N4-RS48-3	Steel shelving unit, 14" D x 48" W x 44.5" H
1	N4-RS84-3	Steel shelving unit, 14" D x 84" W x 44.5" H
2	X50-B	Compact 2-drawer unit

SERVICE

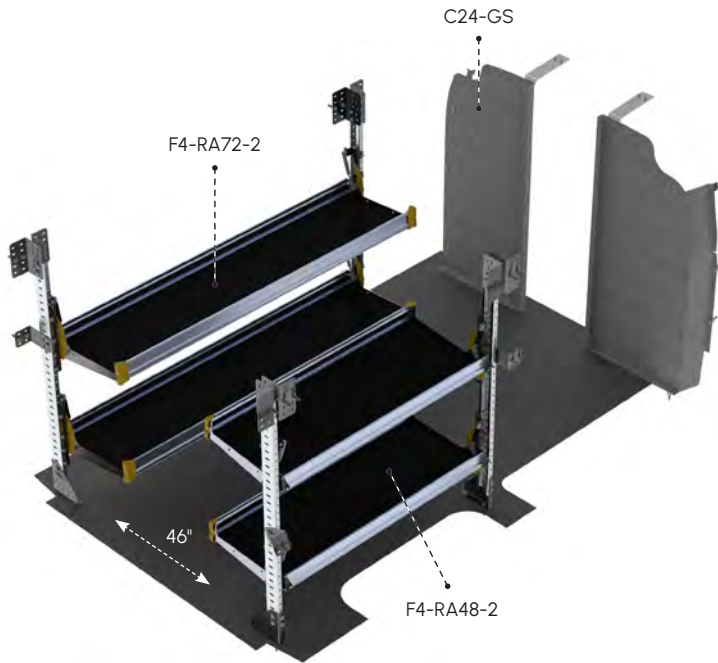


## GSL-16 SERVICE

<b>MATERIAL</b>	Steel	<b>WHEELBASE</b>	155"
<b>WEIGHT</b>	278 lbs	<b>ROOF HEIGHT</b>	Standard
<b>INSTALL TIME</b>	4.6 hrs	<b>QUICKSHIP</b>	Yes

QTY	PART	DESCRIPTION
1	6070	6" Hook, 3" opening, painted
1	6072	8" Swivel hook, 4" opening, painted
4	62-U1114	14" deep plastic bin
1	62-UDR12	Set of 5 dividers for a 12" Shelf
1	62-UDR14	Set of 5 dividers for a 14" Shelf
1	C20-GS	Straight steel partition with perforated window, no access
1	N4-RS48-3	Steel shelving unit, 14" D x 48" W x 44.5" H
1	N4-RS96-3	Steel shelving unit, 14" D x 96" W x 44.5" H
2	X50-B	Compact 2-drawer unit

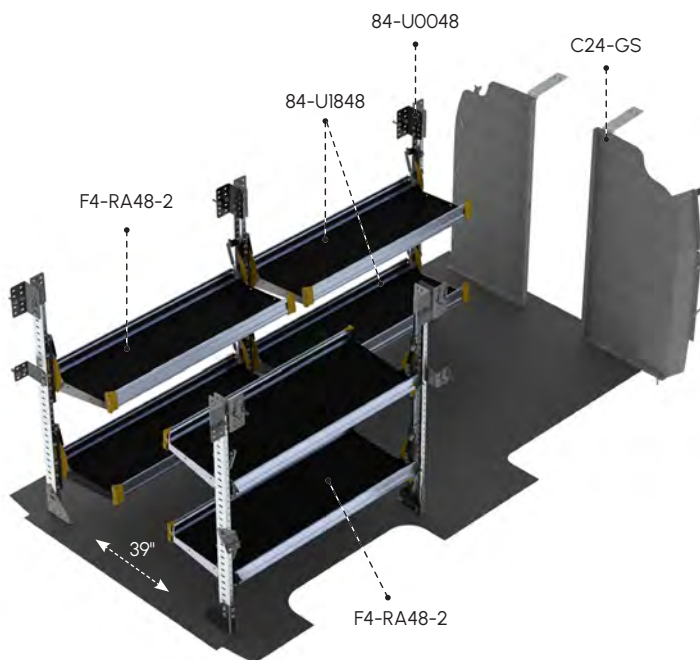
# DELIVERY PACKAGE



## GSR-19 DELIVERY

<b>MATERIAL</b>	Aluminum	<b>WHEELBASE</b>	135"
<b>WEIGHT</b>	194 lbs	<b>ROOF HEIGHT</b>	Standard
<b>INSTALL TIME</b>	4.2 hrs	<b>QUICKSHIP</b>	Yes

QTY	PART	DESCRIPTION
1	<b>C24-GS</b>	Straight walk-through steel partition
1	<b>F4-RA72-2</b>	Fold-away unit, 2 levels, 22" D x 72" W x 47" H
1	<b>F4-RA48-2</b>	Fold-away unit, 2 levels, 22" D x 48" W x 47" H

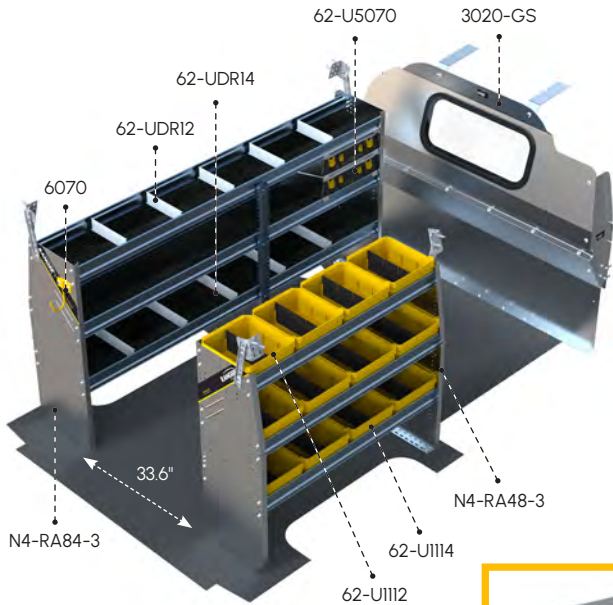


## GSL-19 DELIVERY

<b>MATERIAL</b>	Aluminum	<b>WHEELBASE</b>	155"
<b>WEIGHT</b>	239 lbs	<b>ROOF HEIGHT</b>	Standard
<b>INSTALL TIME</b>	5.3 hrs	<b>QUICKSHIP</b>	Yes

QTY	PART	DESCRIPTION
1	<b>84-U0048</b>	Post assembly for fold-away shelving, 48"
2	<b>84-U1848</b>	Fold-away shelf tray, 18" D x 48" W
1	<b>C24-GS</b>	Straight walk-through steel partition
2	<b>F4-RA48-2</b>	Fold-away unit, 2 levels, 22" D x 48" W x 47" H

# ALUMINUM PACKAGE



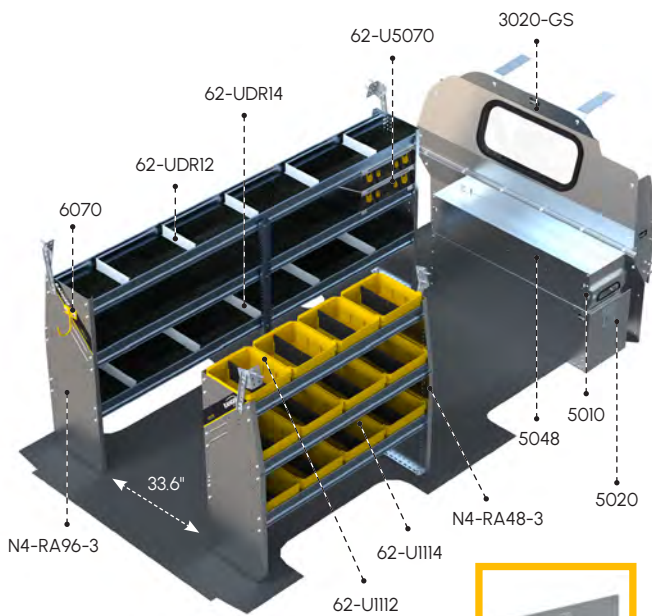
77-UI048

## GSR-27 ALUMINUM

<b>MATERIAL</b>	Aluminum	<b>WHEELBASE</b>	135"
<b>WEIGHT</b>	205 lbs	<b>ROOF HEIGHT</b>	Standard
<b>INSTALL TIME</b>	4.4 hrs	<b>QUICKSHIP</b>	Yes

QTY	PART	DESCRIPTION
1	3020-GS	Contoured safety partition with glass window
2	62-U5070	Partskeeper carry case with holder
1	6070	6" Hook, 3" opening, painted
4	62-U1112	12" deep plastic bin
8	62-U1114	14" deep plastic bin
1	62-UDR12	Set of 5 dividers for a 12" Shelf
1	62-UDR14	Set of 5 dividers for a 14" Shelf
1	77-UI048	Adjustable shelving door unit - 45" W - for 48" & 96" shelves
1	N4-RA48-3	Aluminum shelving unit, 14" D x 48" W x 44.5" H
1	N4-RA84-3	Aluminum shelving unit, 14" D x 84" W x 44.5" H

ALUMINUM



77-UI048

## GSL-27 ALUMINUM

<b>MATERIAL</b>	Aluminum	<b>WHEELBASE</b>	155"
<b>WEIGHT</b>	312 lbs	<b>ROOF HEIGHT</b>	Standard
<b>INSTALL TIME</b>	6.1 hrs	<b>QUICKSHIP</b>	Yes

QTY	PART	DESCRIPTION
1	3020-GS	Contoured safety partition with glass window
1	5010	Partslider drawer 48" D
1	5020	Tool Drawer 48" D x 14" W x 16" H
1	5048	Top edge
2	62-U5070	Partskeeper carry case with holder
1	6070	6" Hook, 3" opening, painted
4	62-U1112	12" deep plastic bin
8	62-U1114	14" deep plastic bin
1	62-UDR12	Set of 5 dividers for a 12" Shelf
1	62-UDR14	Set of 5 dividers for a 14" Shelf
1	77-UI048	Adjustable shelving door unit - 45" W - for 48" & 96" shelves
1	N4-RA48-3	Aluminum shelving unit, 14" D x 48" W x 44.5" H
1	N4-RA96-3	Aluminum shelving unit, 14" D x 96" W x 44.5" H

# ALUMINUM PACKAGE



**N4-RA48-3**  
Aluminum shelving unit



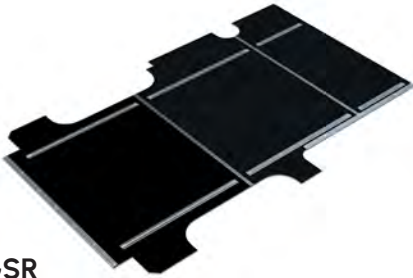
**62-U1114**  
14" Deep plastic bins



**62-U5070**  
Partskeeper carry cases

# FLOORS

An easy and efficient solution that prevents damage to the factory floor of the van.



## 6540-GSR

GMC Savana/Chevrolet Express floor

### MARINE-GRADE PLYWOOD

WHEELBASE	135"
WEIGHT	74 lbs

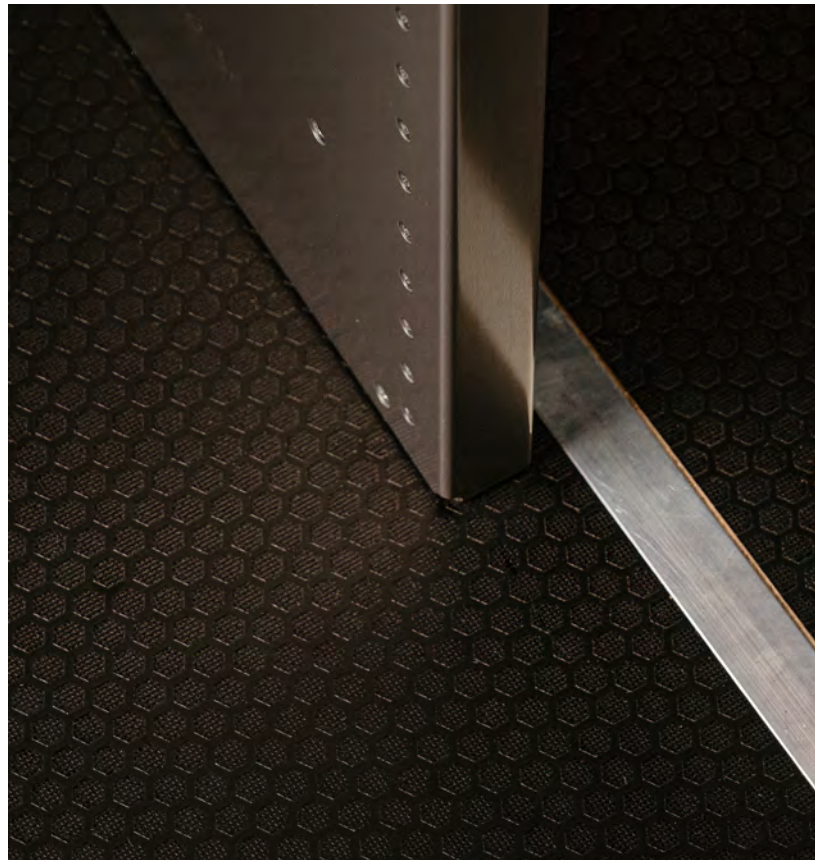


## 6540-GSX

GMC Savana/Chevrolet Express floor

### MARINE-GRADE PLYWOOD

WHEELBASE	155"
WEIGHT	89 lbs



## SAVANA FLOOR

# DRAWERS

Increase storage and organization with Ranger Design's line of drawer units.

FLOORS



## 5010

Partslider drawer

### ALUMINUM

DIMENSIONS	48" D × 12" W × 6" H
WEIGHT CAPACITY	150 lbs
WEIGHT	25 lbs



## 5020

Tool drawer

### ALUMINUM

DIMENSIONS	48" D × 14" W × 16" H
WEIGHT CAPACITY	320 lbs
WEIGHT	70 lbs



## 5048

Top edge, for 5010 Partslider

### ALUMINUM

DIMENSIONS	48" D × 12" W × 4" H
WEIGHT CAPACITY	—
WEIGHT	8 lbs



**TOOL DRAWER TIP:** Stack these drawers for maximum efficiency

# STORAGE UNITS

Ergonomic storage solutions for the cargo space in your vehicle.



**CABINET FOR MILWAUKEE ORGANIZERS**



**62-U5076**  
Shelf Mount for Milwaukee Organizers and Toolboxes

<b>ALUMINUM</b>	
<b>DIMENSIONS</b>	3.3" D x 22.8" W x 14.7" H
<b>WEIGHT</b>	3.6 lbs



**C4-MA20-6**  
Partskeeper Cabinet for Milwaukee Packout Organizers

<b>ALUMINUM</b>	
<b>DIMENSIONS</b>	15" D x 21.8" W x 44.5" H
<b>WEIGHT</b>	40 lbs



**C4-PA18-8**  
Partskeeper Cabinet with 8 Carry Cases

<b>ALUMINUM</b>	
<b>DIMENSIONS</b>	14" D x 19" W x 44.5" H
<b>WEIGHT</b>	60 lbs



**N4-PS20-8**  
Partskeeper Cabinet with 8 Carry Cases

<b>STEEL</b>	
<b>DIMENSIONS</b>	16" D x 20" W x 44.5" H
<b>WEIGHT</b>	74 lbs



**N4-LA16-1**  
Locker with top shelf and 2 hooks

<b>ALUMINUM</b>	
<b>DIMENSIONS</b>	16" D x 14" W x 42" H
<b>WEIGHT</b>	32 lbs



**N4-LS16-1**  
Locker with top shelf and 2 hooks

<b>STEEL</b>	
<b>DIMENSIONS</b>	16" D x 14" W x 42" H
<b>WEIGHT</b>	41 lbs



Compatible Cabinet 5067-6 (Sold separately)

**S2-WA48-0**  
Workbench with hardwood top, 1 end-panel

<b>ALUMINUM</b>	
<b>DIMENSIONS</b>	18" D x 48" W x 32" H
<b>WEIGHT</b>	48 lbs



**S2-WA48-1**  
Workbench with hardwood top, 1 shelf tray

<b>ALUMINUM</b>	
<b>DIMENSIONS</b>	18" D x 48" W x 32" H
<b>WEIGHT</b>	66 lbs

STORAGE UNITS

# ACCESSORIES

Choose the finishing details to tailor the upfit to your specific needs.

## CARGO HOLDERS

Keep your equipment organized with a dedicated storage spot. No more loose reels or cans on the floor. Everything stays secure and easy to reach.



**6057**  
Can Holder

<b>ALUMINUM</b>	
<b>DIMENSIONS</b>	3" D × 8.5" W × 3" H
<b>WEIGHT</b>	1 lb



**6061**  
2-Slot Paper Holder, extra deep

<b>ALUMINUM</b>	
<b>DIMENSIONS</b>	3.75" D × 12.75" W × 12" H
<b>WEIGHT</b>	2 lbs



**6063**  
5-Slot Paper Holder, extra deep

<b>ALUMINUM</b>	
<b>DIMENSIONS</b>	3.75" D × 12.75" W × 24" H
<b>WEIGHT</b>	7 lbs



**6068**  
Wire Hard Hat Holder

<b>STEEL</b>	
<b>DIMENSIONS</b>	—
<b>WEIGHT</b>	1 lb



**7124**  
Reel Holder, two 5/8" rods

<b>ALUMINUM</b>	
<b>DIMENSIONS</b>	7.25" D × 15" W × 24" H
<b>WEIGHT</b>	11 lbs



**5-SLOT PAPER HOLDER ON STEEL SHELF UNIT**

## STORAGE HOOKS

Keep frequently used items such as hats, vests and extension cords hanging within easy reach in your vehicle.



**6070**  
6" Hook, 3" opening

<b>STEEL</b>	
<b>DIMENSIONS</b>	3" D
<b>WEIGHT</b>	2 lbs



**6071**  
Triple 6" Hook, 3" opening

<b>STEEL</b>	
<b>DIMENSIONS</b>	4" D
<b>WEIGHT</b>	1 lbs

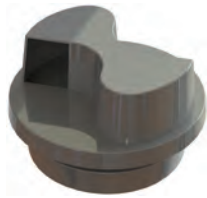


**6073**  
Large Movable Hook

<b>ALUMINUM</b>	
<b>DIMENSIONS</b>	6.5" D × 2.75" W × 4" H
<b>WEIGHT</b>	1 lb

## DRIVER SAFETY

Enhance road safety with accessories that improve visibility, ventilation, and overall awareness. From improved airflow to increased visibility, these features help create a safe driving environment.



**6050**  
Flettner Vent, rotary design  
(4" H above and 1.4" H below)

PLASTIC	
<b>DIAMETER</b>	8.88"
<b>WEIGHT</b>	2 lbs



**6082**  
Triangle Kit and Holder with 3 triangles

ALUMINUM	
<b>DIMENSIONS</b>	5.2" D x 6.4" W x 21.5" H
<b>WEIGHT</b>	15 lb



**6090**  
Back up Alarm, die cast housing, encapsulated circuitry

OTHER	
<b>DIMENSIONS</b>	—
<b>WEIGHT</b>	1 lbs

## LED LIGHTING

Keeps the cargo space bright and visible, no matter what time of day or night. Eliminate any chance of injury when searching through your tools in the dark.



**6092-42**  
Universal LED Light Kit for vans (12V DC / 1200 Lm / 10W)

OTHER	
<b>DIMENSIONS</b>	42" L x 1" H
<b>WEIGHT</b>	1 lb

## GRAB HANDLE

Install a Grab Handle for maximum support and stability when climbing into your van. Grab Handles can also act as tie downs for extra cargo during transport.



**6093-27**  
Large Grab Handle

STEEL	
<b>DIMENSIONS</b>	1.8" W x 30" H x 3.5" D
<b>WEIGHT</b>	3 lbs



VISIT OUR WEBSITE TO  
VIEW MORE ACCESSORIES

# ROOF RACKS

Increase efficiency with the right roof rack for your job.



## CARGO RACK

ALUMINUM			
PART	WHEELBASE	ROOF HEIGHT	LADDER LENGTH
<b>1605-GS</b>	135", 155"	Standard	-
<b>1605-GS3 - 3 bar</b>	135", 155"	Standard	-



## COMBINATION RACK

ALUMINUM			
PART	WHEELBASE	ROOF HEIGHT	LADDER LENGTH
<b>1625-GS</b>	135", 155"	Standard	32 ft



## DOUBLE CLAMP RACK

ALUMINUM			
PART	WHEELBASE	ROOF HEIGHT	LADDER LENGTH
<b>1630-GS</b>	135", 155"	Standard	32 ft
<b>1630-GS3 - 3 bar</b>	135", 155"	Standard	32 ft



## MAX RACK LOW ROOF

ALUMINUM			
PART	WHEELBASE	ROOF HEIGHT	LADDER LENGTH
<b>1840-GS</b>	135", 155"	Standard	32 ft
<b>1850-GS - 2 bar</b>	135", 155"	Standard	32 ft
<b>1850-GS3 - 3 bar</b>	135", 155"	Standard	32 ft



VISIT OUR WEBSITE  
FOR OUR FULL-LINE OF  
LADDER RACKS



CHECK OUT OUR REAR ACCESS  
LADDER BY PRIME DESIGN



# TURNKEY FLEET SERVICES



## Ship Through or Local Installation Across North America for all Types of Cargo Vans

We are pleased to offer an efficient, personalized service to answer all questions regarding:

### 1. Analysis

- › Cargo Needs Analysis
- › Custom 3D CAD Layouts
- › Hands-on Equipment Demo

### 2. Testing

- › Test Fitting
- › Pilot Build and Review
- › Package Optimization based on Technician Feedback

### 3. Delivery

- › Delivery, Production, Installation Planning and Scheduling
- › Vehicle Status Tracking

### 4. Service

- › Dedicated Fleet Account Management Team
- › Distributor Service Support Network
- › Live Customer Service



A Clarience Technologies Company

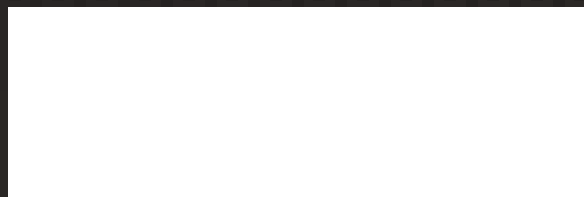
**MAXIMIZE YOUR VAN'S  
STORAGE SPACE AND  
ORGANIZATION WITH  
RANGER DESIGN!**

For the ultimate upfit solution, you can count on Ranger Design to deliver. Engineered for unmatched toughness, our products are built with exceptional craftsmanship and a flawless fit.

The perfect fit for your toughest jobs!



**CONTACT US**  
cs@rangerdesign.com  
1-800-565-5321  
rangerdesign.com



SavanaExpress2026