

**RANGER**  
DESIGN

A Clarience Technologies Company

# BUYERS' GUIDE 2026



# TRAZER

TRUCK UTILITY SYSTEM



# HELPING TRADESPEOPLE WORK MORE EFFICIENTLY WITH ORGANIZED STORAGE SOLUTIONS.

At Ranger Design, we've spent over 30 years perfecting van upfits, and now we're bringing that expertise to pickup trucks. We believe in unlocking the full potential of work vehicles, delivering well-organized, durable, and functional storage solutions that help mobile technicians get the job done faster and more efficiently.

This means:

- Helping you select the right van or pickup truck setup for your specific application.
- Offering engineering support and expert advice to design an optimized workspace.
- Ensuring quick installation, so you can get your vehicle on the road faster.

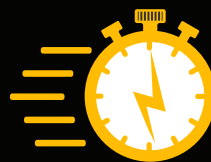
We're committed to bringing you more because we know that better organization leads to better performance.



*Comprehensive  
Truck Utility  
System*



*World-Class  
Customer  
Experience*



*Fastest Lead  
Times in  
The Industry*



*Industry  
Leading  
Quality*



# TABLE OF CONTENTS

- TRAZER TRUCK RACK** ..... P. 4
- TRAZER TOOLBOX**..... P. 6
- TRAZER CANOPY** ..... P. 8
- TRAZER ADD-ONS**
  - Over-the-cab Extension ..... P. 10
  - Cab Protector ..... P. 10
  - Add-on Crossbar Kit ..... P. 11
- TRAZER COMPATIBLE ACCESSORIES** ..... P. 12

# TRAZER TRUCK RACK

The Trazer Rack is the foundation of the entire Trazer Truck Utility System, delivering lightweight strength with an all-aluminum design.



ALUMINUM						
PART	DESCRIPTION	DIMENSIONS	WEIGHT CAPACITY	WEIGHT	INSTALL TIME	QUICKSHIP
RRB-2055	Truck Rack for 5½ ft short bed	67" D x 35.5" H x 72" W	1000 lbs	72.5 lbs	0.8 hr	Yes
RRB-2065	Truck Rack for 6½ ft standard bed	76" D x 35.5" H x 72" W	1000 lbs	76.5 lbs	0.8 hr	Yes
RRB-2080	Truck Rack for 8 ft long bed	96" D x 35.5" H x 72" W	1000 lbs	88.5 lbs	0.8 hr	Yes

## COMPATIBLE TRUCKS:



Ford  
F-150



Chevrolet  
Silverado 1500



GMC  
Sierra 1500



Dodge  
RAM 1500



### Effortless Accessorizing

Provides a platform for accessories and add-ons, tailored to your needs.



### Built for Today and Tomorrow

Easily upgradeable and expandable to adapt to evolving demands.



### Designed to Meet Your Workload

Rugged construction for demanding jobs and daily use.



# TRAZER TOOLBOXES

The Trazer Toolbox is an aluminum storage solution designed with a 3-point latch for security and gas-shock lift-up doors for effortless access once the toolbox is unlatched. A 97-degree opening shields tools from the elements, with a 42" clearance between boxes for added versatility.



TRAZER TOOLBOX

ALUMINUM							
PART	DESCRIPTION	DIMENSIONS	WEIGHT CAPACITY	WEIGHT	INSTALL TIME	QUICKSHIP	
BDW-2055	Toolbox for the 5½ ft short bed	20" D x 24" H x 60.75" W	250 lbs	73.5 lbs	0.2 hr	Yes	
BDW-2065	Toolbox for the 6½ ft standard bed	20" D x 24" H x 70" W	250 lbs	81 lbs	0.2 hr	Yes	
BDW-2080	Toolbox for the 8 ft long bed <i>Launching Spring 2026!</i>	20" D x 24" H x 90" W	250 lbs	108 lbs	0.2 hr	Yes	

## COMPATIBLE TRUCKS:



Ford  
F-150



Chevrolet  
Silverado 1500



GMC  
Sierra 1500



Dodge  
RAM 1500



### **Quick and Easy Access**

One handed easy-lift latch operation for quick access.



### **Aluminum and Composite Construction**

Corrosion-resistant material ensures a strong, lightweight design.



### **Maximize Brand Impact**

Smooth surfaced panels for easy branding.

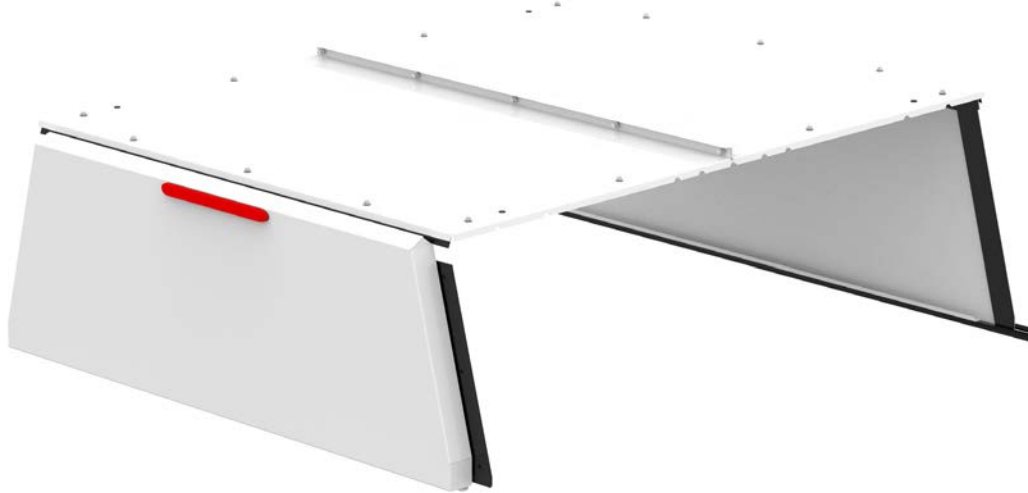


TRAZER TOOLBOX

TRAZER TOOLBOX

# TRAZER CANOPY

Complete your upfit with the all-aluminum canopy, engineered to integrate seamlessly with your Trazer Toolboxes for secure, organized storage in your truck bed.



TRAZER CANOPY

ALUMINUM						
PART	DESCRIPTION	VEHICLE	DIMENSIONS	WEIGHT	INSTALL TIME*	QUICKSHIP
CFW-2055	Canopy, 5.5 ft bed, flat front cap	Ford F-150 RAM 1500	71.3" D x 26.6" H x 70.2" W	77.3 lbs	1 hr	Yes
CFW-2065	Canopy, 6.5 ft bed, flat front cap	RAM 1500	80.2" D x 26.6" H x 70.2" W	80.8 lbs	1 hr	Yes
CFW-2080	Canopy, 8 ft bed, flat front cap <i>Launching Spring 2026!</i>	Ford F-150	100.3" D x 26.6" H x 70.2" W	90.5 lbs	1 hr	Yes
CDW-2055	Canopy, 5.5 ft bed, deep front cap	Chevrolet Silverado 1500 GMC Sierra 1500	72.4" D x 26.6" H x 70.2" W	79.2 lbs	1 hr	Yes
CDW-2065	Canopy, 6.5 ft bed, deep front cap	Ford F-150 Chevrolet Silverado 1500 GMC Sierra 1500	81.2" D x 26.6" H x 70.2" W	80.8 lbs	1 hr	Yes
CDW-2080	Canopy, 8 ft bed, deep front cap <i>Launching Spring 2026!</i>	Chevrolet Silverado 1500, GMC Sierra 1500	101.3" D x 26.6" H x 70.2" W	92.3 lbs	1 hr	Yes

\*Install time excludes wiring for the third brake light

## COMPATIBLE TRUCKS:



Ford  
F-150



Chevrolet  
Silverado 1500



GMC  
Sierra 1500



Dodge  
RAM 1500



### Secure Pickup Tailgate Lock

Utilizes the truck's tailgate lock for full security.



### Weather-Resistant Design

Built to protect tools and cargo from the elements.



### Corrosion-Resistant Construction

Aluminum design for long-lasting strength and reliability.



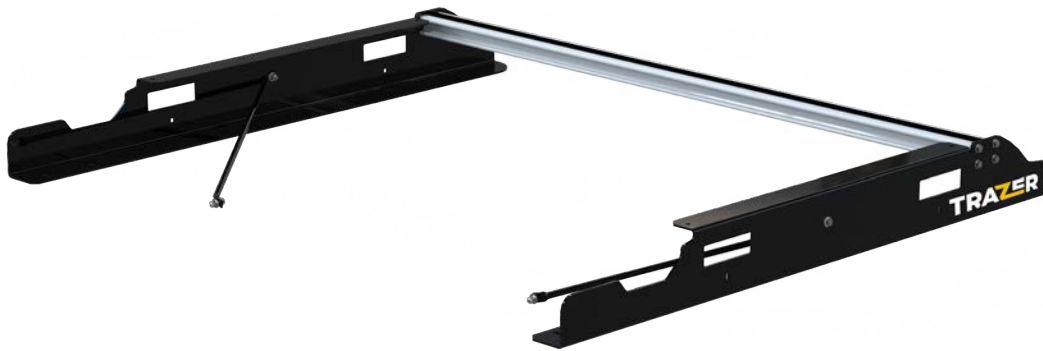
TRAZER CANOPY

TRAZER CANOPY

# TRAZER ADD-ONS

## OVER-THE-CAB EXTENSION

The Trazer OTC is an optional over-the-cab extension for your oversized loads, providing additional storage space and increased weight capacity of the Trazer Rack.



TRUCK RACK ADD-ONS

### ALUMINUM

PART	DESCRIPTION	DIMENSIONS	WEIGHT CAPACITY	WEIGHT	INSTALL TIME	QUICKSHIP
OTC-U6036	Over-the-cab extension - 36"	53" D x 8.5" H x 60.5" W	250 lbs	23.5 lbs	0.5 hr	Yes

## CAB PROTECTOR

The Trazer Cab Protector is a durable, all-aluminum drop-in solution designed to shield your cab from shifting loads, delivering reliable protection on the road.



### ALUMINUM

PART	DESCRIPTION	DIMENSIONS	WEIGHT	INSTALL TIME	QUICKSHIP
RRB-U2001	Drop-in Cab Protector for RRB series	3.13" D x 24.25" H x 70.39" W	18 lbs	0.33 hr	Yes

## ADD-ON CROSSBAR KIT

Enhance the functionality of your Trazer Truck Rack by adding extra crossbars, providing additional support and fork-lift loading capacity for heavy or oversized items.



ALUMINUM						
PART	DESCRIPTION	DIMENSIONS	WEIGHT CAPACITY	WEIGHT	INSTALL TIME	QUICKSHIP
20-UCD72	Add-on double crossbar kit for RRB series	72" L x 5.6" H x 5.5" W	480 lbs	16.8 lbs	0.25 hr	Yes
20-UCS72	Add-on single crossbar kit for RRB series	72" L x 5.6" H x 5.5" W	250 lbs	8.3 lbs	0.2 hr	Yes

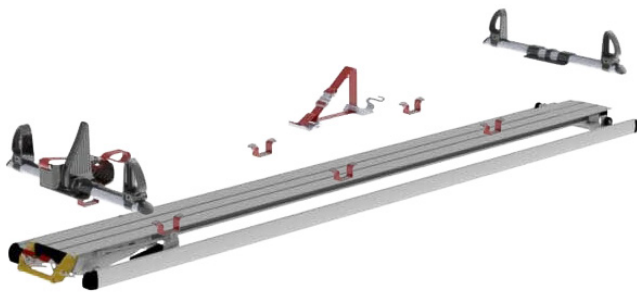


TRAZER OVER-THE-CAB EXTENSION

# TRAZER ACCESSORIES

Add the finishing touches to your Trazer upfit with the right accessories for the job.

## TRAZER COMPATIBLE TRUCK RACK ACCESSORIES



### 16-U0005

Cargo Rack Kit for a single crossbar. Includes: 2 end stops, 2 tie-downs and a 72" track plug

### 16-U0010

Set of 2 Ratchet Straps designed to bolt directly to the end stop of the crossbar

### ALUMINUM REAR LOADER KITS

PART NUMBER	DESCRIPTION	WEIGHT	QUICKSHIP
19-U0001	Rear loader single width bracket	24 lbs	No
19-U0002	Rear loader double width bracket	46 lbs	No
19-U0003	Rear loader mechanism carriage	103 lbs	No

ALUMINUM	
<b>DIMENSIONS</b>	72" L x 2" W x 8" H
<b>WEIGHT</b>	11 lbs
<b>INSTALL TIME</b>	0.1 hr
<b>QUICKSHIP</b>	Yes

POLYESTER	
<b>DIMENSIONS</b>	2.57" D x 3" W x 6.2" H
<b>WEIGHT</b>	3 lbs
<b>INSTALL TIME</b>	0.1 hr
<b>QUICKSHIP</b>	Yes



### 16-U0500

Rear Roller Bar for Cargo Racks and Trazer truck bed racks

### 16-U1127

Step Ladder Kit designed for any single side ladder rack

### 16-U1130

Elevated strobe mount

### 16-U1135

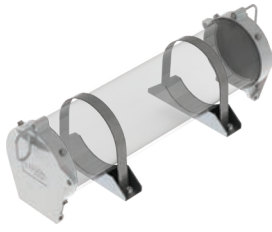
Safe Clamp ladder clamping system (Set of 2)

ALUMINUM	
<b>DIMENSIONS</b>	28" D x 65" W x 6.2" H
<b>WEIGHT</b>	10 lbs
<b>INSTALL TIME</b>	0.5 hr
<b>QUICKSHIP</b>	Yes

ALUMINUM	
<b>DIMENSIONS</b>	96" L x 24" W x 11" H
<b>WEIGHT</b>	19 lbs
<b>INSTALL TIME</b>	0.3 hr
<b>QUICKSHIP</b>	Yes

ALUMINUM	
<b>DIMENSIONS</b>	9" D x 14" W x 7" H
<b>WEIGHT</b>	2 lbs
<b>INSTALL TIME</b>	0.1 hr
<b>QUICKSHIP</b>	Yes

ALUMINUM	
<b>DIMENSIONS</b>	4.67" D x 18" W x 17" H
<b>WEIGHT</b>	5 lbs
<b>INSTALL TIME</b>	0.1 hr
<b>QUICKSHIP</b>	No



### 16-U6079

Transport tube door kit  
(PVC tube not included)

ALUMINUM	
DIMENSIONS	6" D
WEIGHT	5 lbs
INSTALL TIME	0.8 hr
QUICKSHIP	Yes

### 18-U1830

Max Rack 2.0 Low Roof,  
passenger side kit

ALUMINUM	
DIMENSIONS	90" D x 36" W x 16.5" H
WEIGHT	57 lbs
INSTALL TIME	1 hr
QUICKSHIP	Yes

### 18-U1835

Max Rack 2.0 Low Roof,  
driver side kit

ALUMINUM	
DIMENSIONS	89" D x 36" W x 16.5" H
WEIGHT	57 lbs
INSTALL TIME	1 hr
QUICKSHIP	Yes

**LEARN MORE  
ABOUT THE  
TRAZER  
TRUCK RACK  
ACCESSORIES**



TRAZER TRUCK RACK ACCESSORIES

## TRAZER COMPATIBLE TOOLBOX ACCESSORIES



### SNF-55

Add-On Shelf Kit for short bed (5.5') truck box

STEEL	
<b>DIMENSIONS</b>	13" D x 58" W x 9" H
<b>WEIGHT</b>	19 lbs
<b>INSTALL TIME</b>	0.2 hr
<b>QUICKSHIP</b>	Yes



### SNF-65

Add-On Shelf Kit for standard bed (6.5') truck box

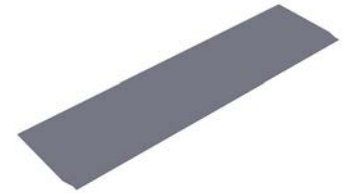
STEEL	
<b>DIMENSIONS</b>	13" D x 66" W x 9" H
<b>WEIGHT</b>	21 lbs
<b>INSTALL TIME</b>	0.2 hr
<b>QUICKSHIP</b>	Yes



### SNF-80

Add-On Shelf Kit for long bed (8') truck box

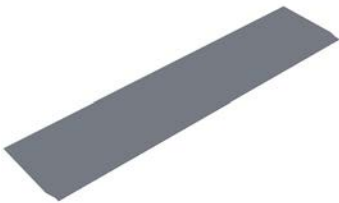
STEEL	
<b>DIMENSIONS</b>	13" D x 86" W x 9" H
<b>WEIGHT</b>	25 lbs
<b>INSTALL TIME</b>	0.2 hr
<b>QUICKSHIP</b>	Yes



### BRM-55

Anti-Slip Rubber Mat for the short bed (5.5') Toolbox

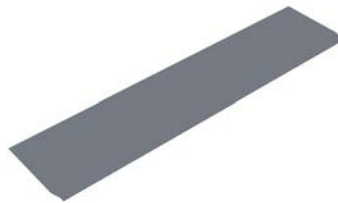
RUBBER	
<b>DIMENSIONS</b>	53" L x 15.5" W
<b>WEIGHT</b>	4.1 lbs
<b>INSTALL TIME</b>	0.1 hr
<b>QUICKSHIP</b>	Yes



### BRM-65

Anti-Slip Rubber Mat for the standard bed (6.5') Toolbox

RUBBER	
<b>DIMENSIONS</b>	67" L x 15.5" W
<b>WEIGHT</b>	4.7 lbs
<b>INSTALL TIME</b>	0.1 hr
<b>QUICKSHIP</b>	Yes



### BRM-80

Anti-Slip Rubber Mat for the long bed (8') Toolbox

RUBBER	
<b>DIMENSIONS</b>	87" L x 15.5" W
<b>WEIGHT</b>	6 lbs
<b>INSTALL TIME</b>	0.1 hr
<b>QUICKSHIP</b>	Yes



### BAK-01

Toolbox Key Starter Kit with 3 of each alternate cylinder, 27 per kit

ALUMINUM	
<b>DIMENSIONS</b>	-
<b>WEIGHT</b>	2 lbs
<b>INSTALL TIME</b>	0 hr
<b>QUICKSHIP</b>	Yes



**THE TOOLBOX STARTER KEY KIT - EASILY CHANGE KEY CYLINDERS WHEN ACCESS NEEDS TO BE UPDATED.**



### 62-U1112

12" Deep Bin with center divider for add-on shelf kit

PLASTIC	
<b>DIMENSIONS</b>	12" D x 11.87" W x 5.25" H
<b>WEIGHT</b>	2 lbs
<b>INSTALL TIME</b>	-
<b>QUICKSHIP</b>	Yes



### 62-U1114

14" Deep Bin with center divider for Toolbox

PLASTIC	
<b>DIMENSIONS</b>	14" D x 11.87" W x 5.25" H
<b>WEIGHT</b>	2 lbs
<b>INSTALL TIME</b>	-
<b>QUICKSHIP</b>	Yes



### 62-U1212

Set of 2 Cross Dividers for bins

PLASTIC	
<b>DIMENSIONS</b>	11.25" D x 0.87" W x 4" H
<b>WEIGHT</b>	0.3 lbs
<b>INSTALL TIME</b>	-
<b>QUICKSHIP</b>	Yes



### 62-UDH12

Set of 5 adjustable 6" High Dividers for a 12" deep shelf

ALUMINUM	
<b>DIMENSIONS</b>	12" D x 1.125" W x 6" H
<b>WEIGHT</b>	3 lbs
<b>INSTALL TIME</b>	-
<b>QUICKSHIP</b>	Yes



### 62-UDR12

Set of 5 adjustable Dividers for a 12" deep shelf

ALUMINUM	
<b>DIMENSIONS</b>	12" D x 1.125" W x 3" H
<b>WEIGHT</b>	1 lbs
<b>INSTALL TIME</b>	-
<b>QUICKSHIP</b>	Yes



### 62-U5079

Partskeeper Carry Case

PLASTIC	
<b>DIMENSIONS</b>	13.5" D x 16.5" W x 4" H
<b>WEIGHT</b>	4 lbs
<b>INSTALL TIME</b>	-
<b>QUICKSHIP</b>	Yes

## LEARN MORE ABOUT THE TRAZER TOOLBOX ACCESSORIES



BINS AND PARTSKEEPER CASES IN THE TRAZER TOOLBOX

# TRAZER

by **RANGER**  
DESIGN  
A Clearance Technologies Company

## TRANSFORM YOUR PICKUP WITH THE TRAZER TRUCK UTILITY SYSTEM

Maximize cargo space with Trazer's all-aluminum, storage solutions, designed for durability and built to perform. Get organized, work smarter, and make every inch of your truck count.



### CONTACT US

[cs@rangerdesign.com](mailto:cs@rangerdesign.com)

1-800-565-5321

[rangerdesign.com](http://rangerdesign.com)

